

A decorative border surrounds the central text, featuring various travel-related icons such as a compass, a globe, a map, a mountain, a flag, a location pin, and a globe with a cross-section showing internal layers. The icons are rendered in a simple, colorful, cartoonish style.

International Baccalaureate EXHIBITION

FRIDAY, NOVEMBER 8
IBMA PYP SESSION

AGENDA

- Introductions
- Overview of Exhibition
- Discussion
- Additional Resources
- Independent Work Time



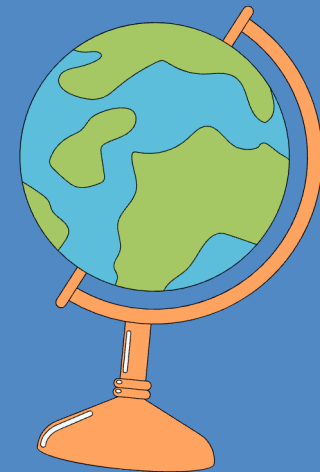
WHO WE ARE

Name

Role

School

Share one exhibition glow



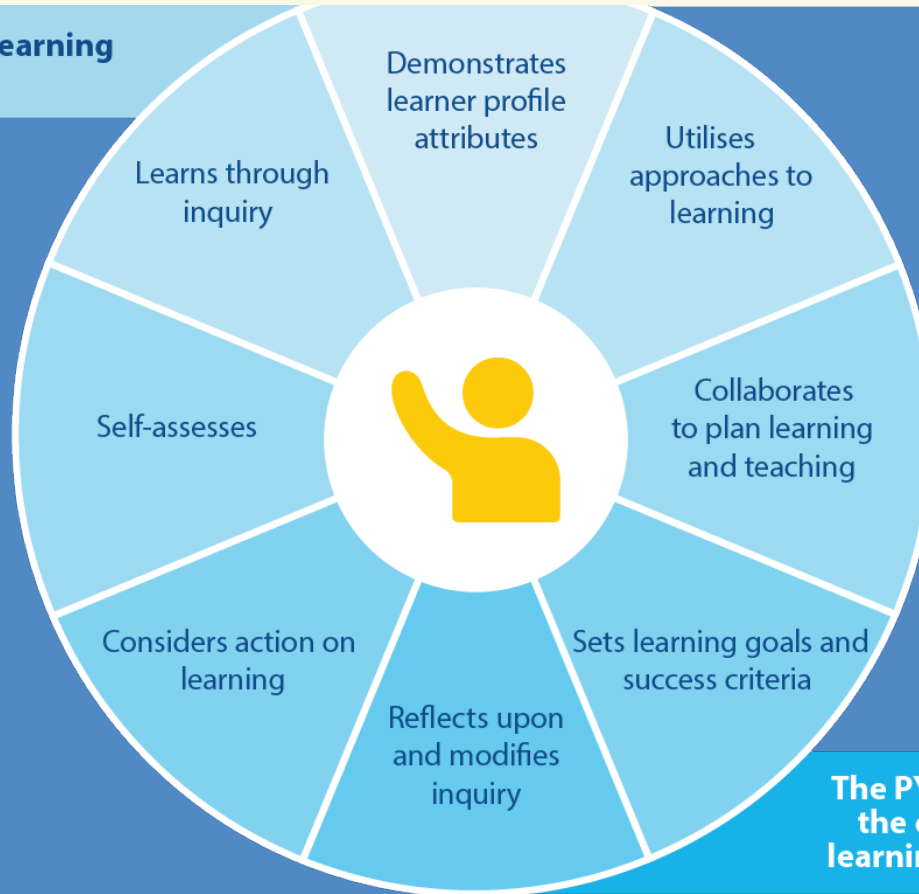
WHAT IS EXHIBITION?

The exhibition is the culminating, collaborative experience in the final year of the PYP. The exhibition is an authentic process for students to explore, document and share their understanding of an issue or opportunity of personal significance. All exhibitions are student-initiated, designed and collaborative.

Exhibitions are not required in candidate schools but they can, if they want to give it a try.



Prior PYP learning



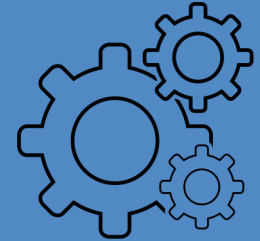
**The PYP exhibition:
the culminating
learning experience**

IMPORTANT NOTES TO REMEMBER



- The exhibition may be one of the six units of inquiry during the final year or it may stand outside of the programme of inquiry to explore a global issue or opportunity that may cross all transdisciplinary themes.
- It may run concurrently with other units or be contained within a specific time frame during the year
- Exhibitions are not required in candidate schools but they can if they want to give it a try.
- For schools that offer the PYP only in the early years, an exhibition is not required.

TOOLS FOR PLANNING EXHIBITION



- Programme Resource Center
- IB Exchange
- IB Nano PDs and Playlist
- IBMA Website
- Toddle Learn
- World's Largest Lesson

PLANNING DISCUSSION

Topics	Guiding Questions
Organization	How does exhibition work at your school?
Timing	When do students work on exhibition?
Global Issues	How does your school share about global issues in a developmentally appropriate way?



SUPPORT DISCUSSION

Topics

Mentorship

Student Ownership

Research

Guiding Questions

How do you involve the school community?

How do students demonstrate voice, choice, and ownership?

What opportunities are there for students to learn from others about their topics?



RESOURCES DISCUSSION

Topics

Trainings

Resources

Advice

Guiding Questions

How do you enable teachers to execute exhibition?

What resource(s) do you find most helpful?

What is one piece of advice you would give other IB educators?



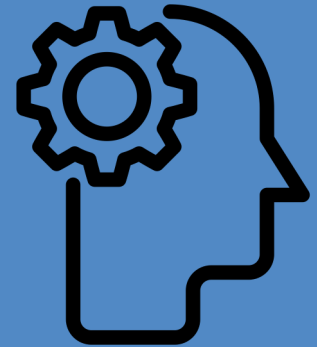
EXHIBITION REFLECTION

3 whys thinking routine :

Why does exhibition matter to me?

Why does exhibition matter to my school community?

Why does exhibition matter to the broader community?



ADDITIONAL RESOURCES

- Global Goals Inquiry Journal
- United Nations Global Goals Resources
- Toddle Exhibition Planner
- Student checklists
- Please upload any additional resources you may have!

